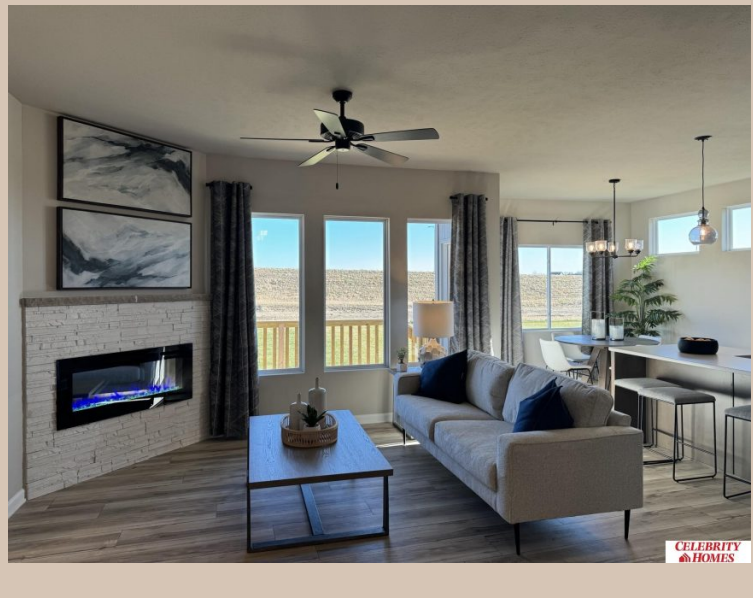


16920 Newport Avenue, Omaha, Ne 68116



Details

Price : 381900
Style : 1.0 Story/Ranch
Floorplan : Jordan
Communities : Lakeview 168
Bedrooms : 3
Baths : 2
Sq Footage : 1920
Included : Welcome to The Jordan by Celebrity Homes. This Ranch Design offers 3 bedrooms on the main floor (2 on one side, 1 on the other)...with privacy for the Owner's Suite! The JORDAN Design has a spacious main floor Gathering Room leading into an Eat-In Island Kitchen and Dining Area. And with Raised Ceilings towering over 9', the main floor seems even more spacious. Plenty of room in the lower level for a Rec Room, additional Bedroom, and even another ¾ Bath! Owner's Suite is appointed with a walk-in closet, ¾ Privacy Bath Design with a Dual Vanity. Features of this 3 Bedroom, 2 Bath Home Include: 2 Car Garage with a Garage Door Opener, Refrigerator, Washer/Dryer Package, Quartz Countertops, Luxury Vinyl Panel Flooring (LVP) Package, Sprinkler System, Extended 2-10 Warranty Program, 3/4 Bath Rough-In, Professionally Installed Blinds, and that's just the start! (Pictures of Model Home) Price may reflect promotional discounts, if applicable
Estimate Completion : 90 Days
School District : Bennington
Directions : From 168th & Ida St, Head South to Reddick. Turn right (West) into community. Visit model homes at Highland Hills for access to homes and Community Map.

Location



Scan the code above with your mobile device or click it to go directly to the Celebrity Homes & Townhomes website for 16920 Newport Avenue, Omaha, Ne 68116