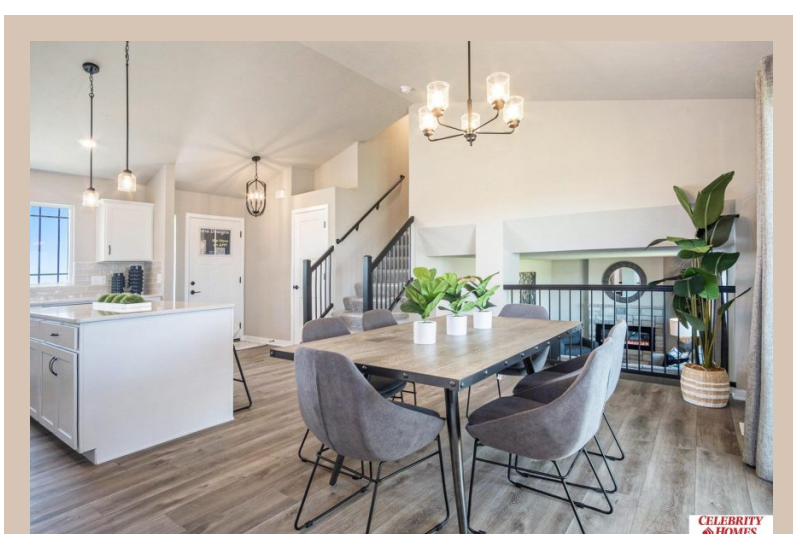
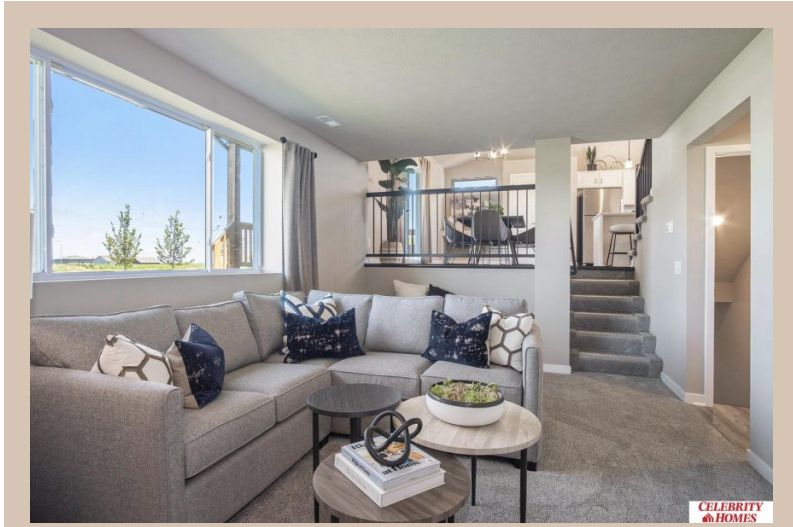


16913 Newport Avenue, Omaha, Ne 68116



## Details

Price : 372900

Style : Multi-Level

Floorplan : Weston

Communities : Lakeview 168

Bedrooms : 3

Baths : 3

Sq Footage : 1986

Included : Welcome to The Weston by Celebrity Homes. Think SPACIOUS when you think The Weston. You don't need to look at the square footage to tell you that this New Home has plenty of space. Starting with the Large Eat In Island Kitchen and Dining Area. A few steps away is the Gathering Room which is sure to impress with its' Electric Linear Fireplace. Need to entertain or just relax? The finished lower level is just PERFECT! A "Hidden Gem" of the Weston is its' upper level Laundry Room.. near all the bedrooms! Large Owner's Suite is appointed with a walk-in closet, ¾ Bath with a Dual Vanity. Features of this 3 Bedroom, 3 Bath Home Include: 2 Car Garage with a Garage Door Opener, Refrigerator, Washer/Dryer Package, Quartz Countertops, Luxury Vinyl Panel Flooring (LVP) Package, Sprinkler System, Extended 2-10 Warranty Program, Professionally Installed Blinds, and that's just the start! (Pictures of Model Home) Price may reflect promotional discounts, if applicable  
Estimate Completion : 180 Days  
School District : Bennington  
Directions : From 168th & Ida St, Head South to Reddick. Turn right (West) into community. Visit models for access to homes and Community Map.



Scan the code above with your mobile device or click it to go directly to the Celebrity Homes & Townhomes website for 16913 Newport Avenue, Omaha, Ne 68116

## Location



