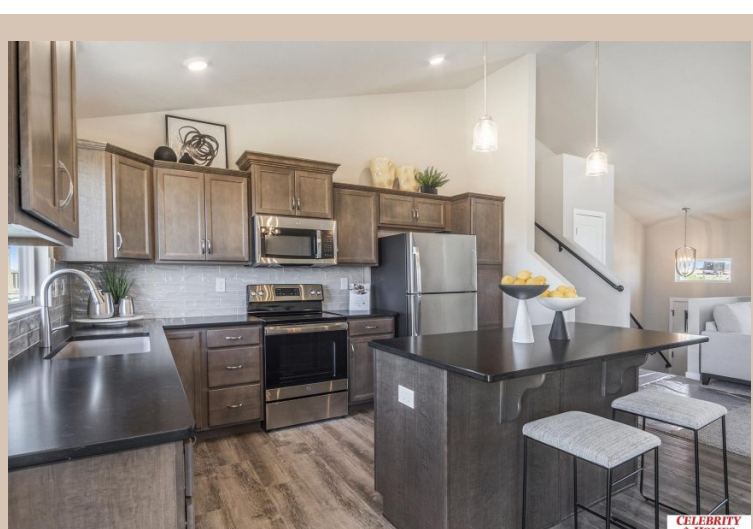
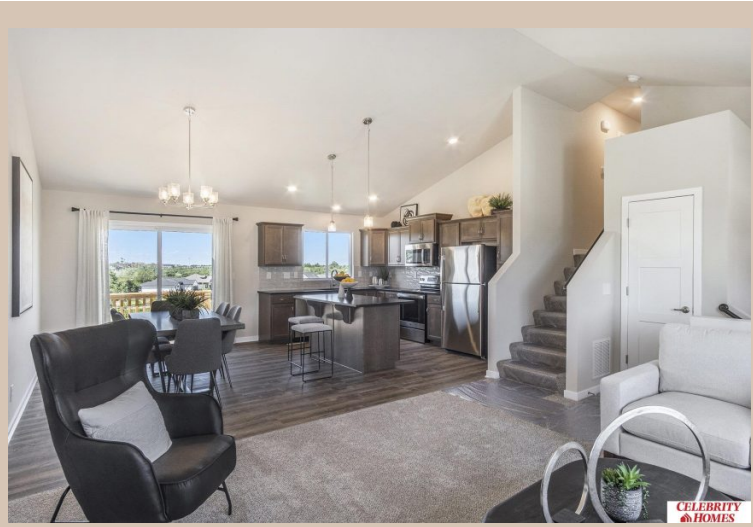


10611 Portage Drive, Papillion, Ne 68046



Details

Price : 346400  
Style : Multi-Level  
Floorplan : Carlton  
Communities : Schram 108  
Bedrooms : 3  
Baths : 2  
Sq Footage : 1732  
Included : Welcome to The Carlton by Celebrity Homes. An Open Foyer welcomes you to this truly Spacious Design. Once on the main floor, the Gathering Room is sure to impress with its’ high ceilings and Electric Linear Fireplace. An Eat-In Island Kitchen with Dining Area is perfect for a growing family. Need to entertain or just relax, the finished lower lever is PERFECT! And the additional daylight windows are the magic touch. Owner’s Suite is appointed with a walk-in closet, ¾ Bath with a Dual Vanity. Features of this 3 Bedroom, 2 Bath Home Include: Oversized 2 Car Garage with a Garage Door Opener, Refrigerator, Washer/Dryer Package, Quartz Countertops, Luxury Vinyl Panel Flooring (LVP) Package, Sprinkler System, Extended 2-10 Warranty Program, ½ Bath Rough-In, Professionally Installed Blinds, and that’s just the start! (Pictures of Model Home) Price may reflect promotional discounts, if applicable  
Estimate Completion : 150 Days  
School District : Papillion-La Vista  
Directions : From Highway 370 & 108th Street, head south on 108th Street. Travel to Portage Dr. Head east into Schram 108. Visit model homes for access to homes and Community Map

Location



Scan the code above with your mobile device or click it to go directly to the Celebrity Homes & Townhomes website for 10611 Portage Drive, Papillion, Ne 68046